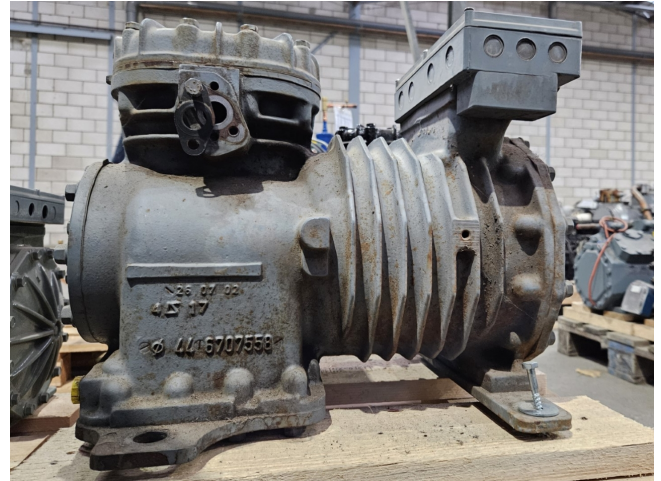


# DWM DLFP-20X-EWL

## Specifications

Marka	DWM
Typ	DLFP-20X-EWL
Czynnik chłodzący	Freon
kW at -20°C/+40°C	4,0
kW at -30°C/+40°C	2,3
kW at -40°C/+40°C	1,0
m <sup>3</sup> / h	12,9
Uwagi	Y.o.b. 2002
Waga kg.	86 kg
Rozmiary	500x340x360 mm (LxWxH)
Stock	1



## Description

### Used DWM DLFP-20X-EWL

Used Copeland DLFP-20X-EWL semi-hermetic piston compressor. The compressor has a displacement of 12,9 m<sup>3</sup>/h.

\*Why choose for HOSBV? We are not only the largest used refrigeration specialist in Europe, but also, we deliver all equipment including an extensive test, warranty and an industrial cleaning. \*Optionally we can also perform a new paint job and arrange the logistics.

